



# Musashi-1 mouse mAb

<b>Catalog No</b>	YP-Ab-01092
<b>Isotype</b>	IgG
<b>Reactivity</b>	Human;Mouse;Rat
<b>Applications</b>	WB
<b>Gene Name</b>	msi1
<b>Protein Name</b>	
<b>Immunogen</b>	Purified recombinant human Musashi-1 protein fragments expressed in E.coli.
<b>Specificity</b>	This antibody detects endogenous levels of Musashi-1 and does not cross-react with related proteins.
<b>Formulation</b>	Liquid in PBS containing 50% glycerol, 0.5% BSA and 0.02% sodium azide.
<b>Source</b>	Monoclonal, Mouse
<b>Purification</b>	The antibody was affinity-purified from mouse ascites by affinity-chromatography using epitope-specific immunogen.
<b>Dilution</b>	wb 1:1000
<b>Concentration</b>	1 mg/ml
<b>Purity</b>	≥90%
<b>Storage Stability</b>	-20°C/1 year
<b>Synonyms</b>	MSI1;Musashi-1;Msi 1;Msi1;MSI1H_HUMAN;Musashi homolog 1;Musashi-1;Musashi1;RNA binding protein Musashi homolog 1;RNA-binding protein Musashi homolog 1.
<b>Observed Band</b>	39kD
<b>Cell Pathway</b>	Cytoplasm . Nucleus .
<b>Tissue Specificity</b>	Detected in fetal kidney, brain, liver and lung, and in adult brain and pancreas. Detected in hepatoma cell lines.
<b>Function</b>	domain:The first RNA recognition motif binds more strongly to RNA compared to the second one.,function:RNA binding protein that regulates the expression of target mRNAs at the translation level. Regulates expression of the NOTCH1 antagonist NUMB. Binds RNA containing the sequence 5'-GUUAGUUAGUUAGUU-3' and other sequences containing the pattern 5'-[GA]U(1-3)AGU-3'. May play a role in the proliferation and maintenance of stem cells in the central nervous system.,similarity:Belongs to the Musashi family.,similarity:Contains 2 RRM (RNA recognition motif) domains.,tissue specificity:Detected in fetal kidney, brain, liver and lung, and in adult brain and pancreas. Detected in hepatoma cell lines.,
<b>Background</b>	This gene encodes a protein containing two conserved tandem RNA recognition motifs. Similar proteins in other species function as RNA-binding proteins and play



central roles in posttranscriptional gene regulation. Expression of this gene has been correlated with the grade of the malignancy and proliferative activity in gliomas and melanomas. A pseudogene for this gene is located on chromosome 11q13. [provided by RefSeq, Jul 2008],

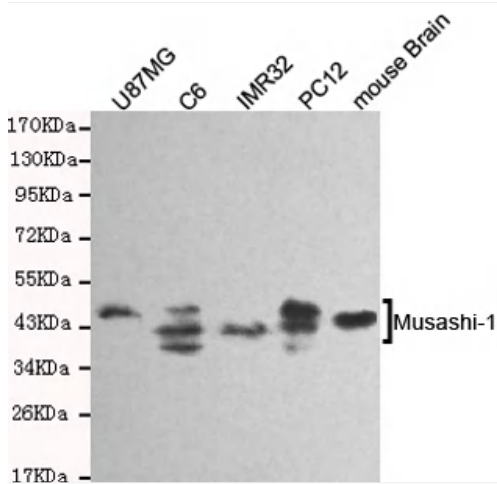
**matters needing attention**

Avoid repeated freezing and thawing!

**Usage suggestions**

This product can be used in immunological reaction related experiments. For more information, please consult technical personnel.

**Products Images**



Western blot detection of Musashi-1 in U87MG,C6,IMR32,mouse brain and PC12 cell lysates and using Musashi-1 mouse mAb (1:1000 diluted).Predicted band size: 39KDa.Observed band size:39KDa.